



First look at Circa Central Park's refined amenity spaces

The Harlem condo comes with more standard amenities like a gym, as well as picnic baskets for trips to Central Park

BY **AMEENA WALKER** | OCT 3, 2017, 10:30AM EDT



Photos courtesy Eduard Hueber for FXFWLE Architects.

[Circa Central Park](#), the semicircular condo on Central Park's last undeveloped corner, began welcoming residents in June. Back in April, we [got a look](#) at a couple of model residences that gave an idea of what the elegant Artimus Construction-developed building's market-rate units would look like. Now, we have an exclusive sneak peek at a handful of the building's amenity spaces.

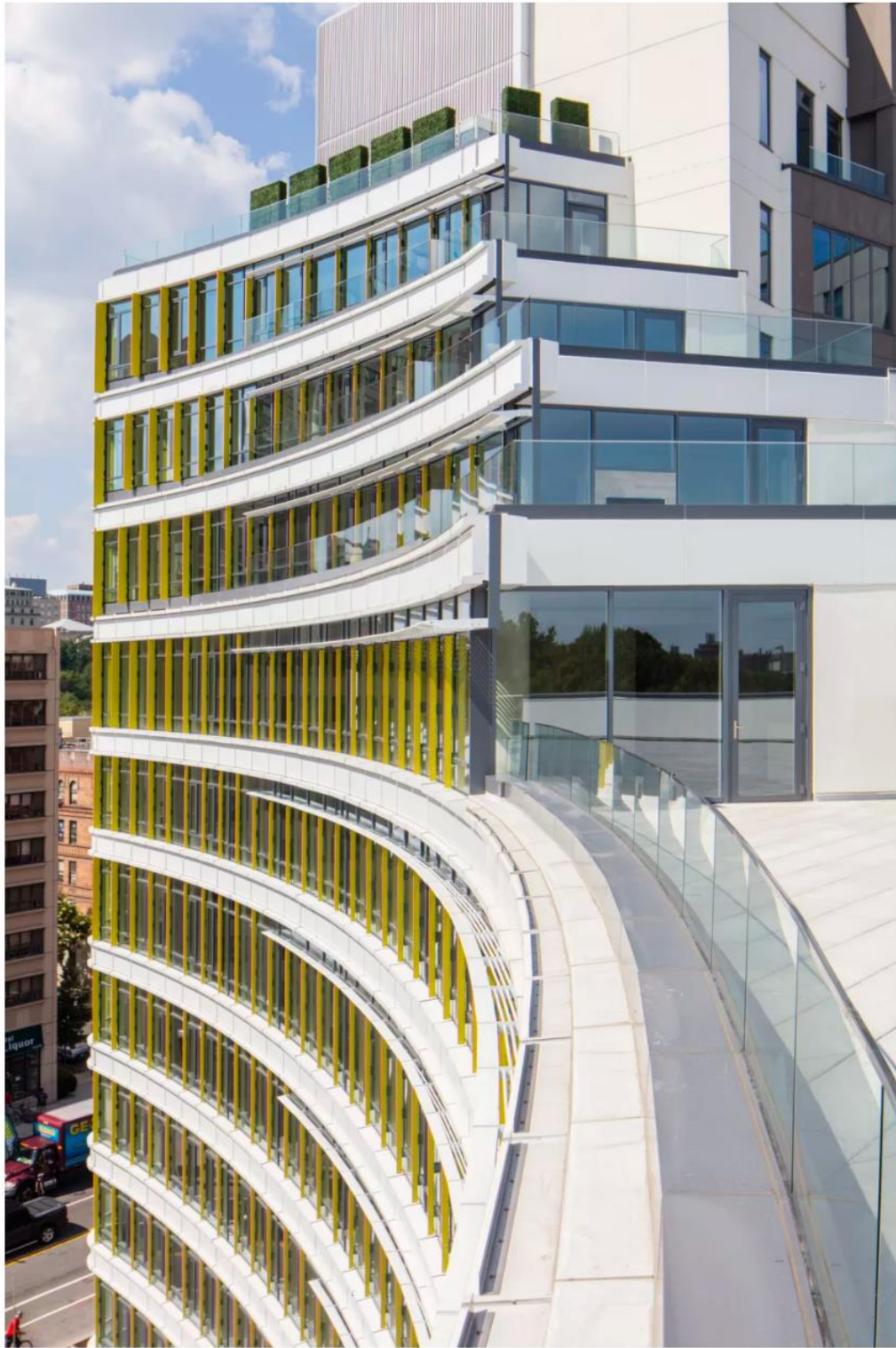
The FXFOWLE-designed building, which has 38 apartments priced from \$1.3 million spread over 11 floors, doesn't shortchange on its amenities. As we've [previously reported](#), there's a fitness center, a 3,000-square-foot landscaped courtyard, picnic baskets that you can use during a trip to the park, and even remote controlled boats. There are more standard amenities in place as well like a children's playroom, a study room for kids (with MacBooks), and a shared rooftop terrace.

Much like the rest of Circa Central Park, the design of the amenity spaces isn't over-the-top but is well appointed. Here's a few looks below of the lobby, resident's lounge, children's playroom, and the rooftop terrace:





There are currently [ten active listings on StreetEasy](#) with three in contract, including the building's four-bedroom penthouse for \$7.48 million.



- [Harlem's Circa Central Park reveals its casually elegant interiors](#) [Curbed]
- [Circa Central Park](#) [Curbed NY]

QUINN